



Parish Magazine

November 2021



Beech Tree Cloister, linocut, size 25cms x 30 cms

by Howard Phipps (Please note that this image has been slightly cropped from the original).

STaB is published by the Parochial Church Council and delivered free of charge to every home in Stratford Tony and Bishopstone. We hope you find it interesting and informative. **Donations towards publication costs are always welcome.**

Donations should be made payable to Bishopstone Parochial Church Council and sent to: The Treasurer, Bishopstone PCC, Ebble Cottage, Mill Lane, Bishopstone, SP5 4BG. Please state on a cover note that it is for STaB.

The views in this magazine are not necessarily those of the PCC.

Editor: Kate Pendlenton: 780655

Editorial Team: Robert Pendlenton 780655

Cally Edwards: 780079

Email: **teamstab2019@gmail.com**

Advertising

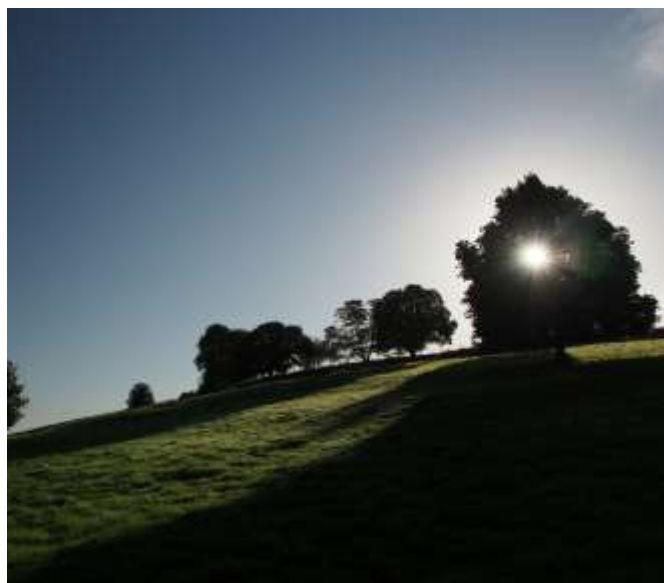
Sarah Brough: 07825 442110

E.mail: **stabads@outlook.com** *(please note new e.mail address)*

Any articles for inclusion are to be submitted by 5pm on the 20th of the month to appear in the next issue - *unless the magazine is already full.*

The editors reserve the right to edit all contributions.

Thank you to everyone who has given us such positive feedback about STaB in recent months. Thanks too to those who have written, and continue to write, such interesting articles, particularly our regular contributors. We love the magazine to feature as many parish residents as possible, so please let us know if you would like to contribute anything, either as a one-off or a perhaps even a regular feature (quarterly, or monthly?). Ideas we have seen in other parish publications include the night sky, local farming, village architecture, and a quiz.... Are you inspired?! Do get in touch if so!



Sunrise at Fifield Bavant, photo by Rob Pendlenton.

A warm welcome to Bishopstone and Stratford Tony...

Please let us know if you know of anyone who moves into Bishopstone or Stratford Tony - or indeed if you yourself have recently moved in, do introduce yourselves! - so that we can offer them/you a welcome in STaB.



Hello from the Revd Canon Jenny Taylor



Thank you to everyone who contributed in any way to Bishopstone Harvest Festival at the end of September. I know how thrilled the Trussell Trust was with our donations. With COP26 in Glasgow almost upon us Harvest seemed particularly poignant this year. Let's hope that out of the talking comes real action which enables us all to play our part in safeguarding our world for future generations.

Singing in church is still somewhat of a novelty and the glorious Harvest hymn "To thee, O Lord, our hearts we raise" sung to the equally glorious tune entitled "Golden Sheaves" rang out with utter joy as we celebrated Harvest. This lovely hymn also points us forward into November, the month of Remembrance. We sing in verse 4:

O blessed is that land of God where saints abide for ever;

and we might well question, who are these saints? The answer comes in the preceding verse:

*May we, the angel reaping o'er, stand at the last accepted,
Christ's golden sheaves for evermore to garners bright elected.*

What a wonderful comforting picture that raises as we contemplate the lives of all those who have died who were dear to us (especially over these last eighteen months) and of course, as we remember all those members of the Military who died fighting that we might have peace. Please join us for our Remembrance Service in church on Sunday 14th November at 10.50am.

I am reminded of those words from Revelation describing God's Kingdom, "See, the home of God is among mortals. He will dwell with them; he will wipe every tear from their eyes. Death will be no more; mourning and crying and pain will be no more, for the first things have passed away."

Understandably this season can make us feel melancholic or sad or even depressed so it is good to have a timely reminder that our Christian faith is indeed one of hope, hope of a just and equal future where we stand together as Christ's golden sheaves and mourning and crying and pain will be no more.

Our hearts go out especially to Jill Bebbington and Marion Rampton as they mourn the deaths of their dear husbands, Alan and Bill. They will both be sadly missed by all their friends and families and our Village communities.

Chalke Valley Team Ministry - Parish of Bishopstone and Stratford Tony

Team Rector: The Revd Catherine Blundell 01722 780134

Team Vicar responsible for Bishopstone and Stratford Tony:

The Revd Canon Jenny Taylor 01722 503081

Church Wardens: George Brutton 01722 718539 Sarah Seal 01722 780305

Lay Pastoral Assistants: Sally Leaver 01722 780447 Sheila Nell 01722 781120

Team Administrator: Emily Broomhead 07890 262376

The Friends of Bishopstone Church

If you would like to help the Friends of Bishopstone Church with their work of preserving the fabric of this beautiful building, please contact the Treasurer Norman Barter (01722 780471).

Remembrance Sunday



We will hold our annual Service of Remembrance in the church, starting at **1050 hrs (10.50 am)**, on Sunday 14th November 2021 with the whole Country.

The service will be led by The Revd Canon Tony Monds following the normal sequence of events. We look forward to a good attendance and support from the Village. The names of the fallen and the epitaphs will be read, and a new wreath laid at the Memorial Plaque.

Door-to-door collections for the RBL Poppy Appeal will begin on Saturday 30th October and tins will also be available in the White Hart and in the Village Hall.

After the service, a curry lunch will be served in the White Hart Inn, for anyone interested, under the current Covid-19 rules! Call Tom or Zara direct to reserve your place: Tel 780244.



Parish Council

The next meeting of the Parish Council will take place on **Thursday 11th November at 7.00pm in the Village Hall**. The agenda for the meeting will be posted on the Village Noticeboard and on the village website. Anyone from the parish may attend.

CHANGE OF DATE: Parish Council meetings are normally held on the second Thursday of alternate months. However, the meeting in January 2022 will be on the first Thursday (6th January) at 7.00pm in the Village Hall.

Covid Update

There have been a number of new cases of COVID 19 in the village. This serves as a reminder of how easily this disease is transmitted. Even if you are fully vaccinated you can both get the infection and pass it on to others. Despite the lifting of restrictions, it still pays therefore to continue using masks, sanitizing hands and keeping distance.

It is also important to carry out regular rapid Lateral Flow Tests on yourself. About 1 in 3 people with COVID do not have symptoms but can still infect others. LFTs are easy to use and test kits are available free to all. Full details are on the NHS website and a list of the nearly 20 locations in Salisbury where free kits can be collected is available on the village website (www.bishopstone-salisbury.co.uk). If you have COVID symptoms you should take the different PCR test – see NHS website.

Time to Clear Watercourses

Our thanks to those property owners who have acted following the item in October's STaB asking that watercourses are cleared of obstructions which may increase flood risk. **For those who are yet to act, please do so as quickly as possible.**

The remaining potential problem is the substantial amount of weed growth in some sections of the main river. Dealing with this is a matter for adjoining landowners. It is important that when this is cut it is removed and not allowed to float downstream. If that happens the bridges get blocked and the flow of water is impeded.

The Parish Steward has cleared most of the “grips” (which drain water from the roads into roadside ditches). **Please help us reduce flood risk in the village this winter by ensuring that all channels are clear of obstruction.**

Bishopstone Parish Council



Additional Defibrillator in the Village

In the October edition of STaB I reported that consideration would be given at the November meeting of the Parish Council to the acquisition of the redundant phone box opposite Pitts Lane for use as a location for an additional defibrillator in the village. In the event things have moved more quickly!

BT announced in 2019 that the box would be removed due to lack of use, but little had happened in the meantime - other than a more luxuriant growth of ivy! (see picture) However, when BT was contacted about transferring ownership to the Parish Council it emerged that removal was imminent. It was therefore decided to take immediate action and purchase the kiosk. It became the property of the Parish Council in early October.



Under a national agreement with the Community Heartbeat Trust (a charity which provided our existing defibrillator at the Village Hall) BT will transfer ownership of redundant kiosks to parish councils for a nominal sum and continue to provide the electrical supply needed for a defibrillator cabinet for heating and lighting. The Parish Council has purchased from the CHT the defibrillator and rescue pack, the cabinet, signage, installation and back-up services, including training.

It is hoped that the defibrillator will be installed later in November. This picture (of the kiosk in Broad Chalke) shows how it might look.



Training

A further announcement will be made in due course about the arrangements for a training course. This will involve a couple of hours in the Village Hall. If you are interested in attending the course on how to use the defibrillator, particularly if you live at the eastern end of the village where the new unit will be located, please let me know. The training provided when the first defibrillator was installed was well attended. **The new training session will also be open to those who attended that course and want a refresher.** Anyone interested in this training please pre-register by emailing: bishopstoneclerk@btinternet.com.

Mike Ash

Village Hall



November 2021

LATEST COVID ADVICE:

Following the recent outbreak of Covid 19 in the Village and the consequent cancelling of some events, the Trustees would like to assure everyone that, barring any similar problems, events, as described below, will take place as planned.

We would, however, like to re-enforce the advice to wear face coverings while moving about in the Hall, to use hand gel regularly, and to sign in with the QR code if possible to help the NHS test and trace system.

There will be extra ventilation to reduce the risks so do dress warmly, though we shall endeavour to keep the Hall at a comfortable temperature during cold weather by ventilating well beforehand, during an interval and then having only short bursts during events.

We would also remind you not to come to the Hall if you are at all unwell, and would recommend taking a lateral flow test before mixing with others if you have been in contact with someone who has or maybe carrying Covid, even if you are fully vaccinated.

QUIZ NIGHT

The return of the popular Quiz Night will be on **Saturday 30th October.**

7.00pm for a 7.30pm start. Teams of four.

£10 per head (£40 per team) to include supper. A bar will be available.

Profits will be shared with the mental health charity "Mind".

Booking essential. Call Caroline Ash on (01722) 781044

BISHOPSTONE COMMUNITY CAFE

These are normally held on alternate Thursdays. The next coffee mornings will be on **Thursdays November 4th, 18th and December 2nd, 10.30 am until 12.00noon.**

Everyone is welcome to look in for a coffee and chat.

There is presently no charge for refreshments.

BISHOPSTONE COMMUNITY LUNCHES

The following dates for lunches are:

Wednesday 3rd November when Dr Alastair Lack will be talking about
“Cholera in Salisbury”

Times as usual: 12.00 noon for 12.30 pm.

The Christmas lunch will be on **Wednesday 1st December.**

Advance booking is essential. Please telephone Caroline Ash on (01722) 781044 and advise her of any dietary requirements. The cost is £7.50 for a two-course lunch and a drink.

MOVIOLA at Bishopstone

Friday 26th November – ‘The Father’ starring Anthony Hopkins and Olivia Colman. *A man refuses all assistance from his daughter as he ages. As he tries to make sense of his changing circumstances, he begins to doubt his loved ones, his own mind and even the fabric of his reality.*

Doors open at 7pm with the film commencing at 7.30pm

Advance booking is essential. Tickets are **£6.00** and are available from Caroline Ash on (01722) 781044.

A cash bar with snacks and ices will be available.

CHRISTMAS FAIR - Friday 3rd December at 6pm

Stalls will include:

Tombola: run by Francis Taylor, 14 The Croft 01722 780316.

Cakes and preserves: run by Margaret Barter, Vella House 01722 780471.

Donations gratefully received by Francis or Margaret or can be collected.

We are looking forward to welcoming a good selection of independent craft stallholders, many of whom exhibited at the very successful Lockdown Arts and Crafts Show run by James Thompson.

Come along and start your Christmas shopping!

Coffee/teas, mince pies and cider will be available.

(NOTE: NO bric-a-brac or bookstalls this year.)



The annual Village Christmas Card will be available at the Fair, with profits from this and 50% of Fair takings being donated to The Wiltshire Air Ambulance, who will be sending a speaker to our Community Lunch on January 5th, when they will be presented with a cheque.

HALL BOOKINGS FOR SOCIAL EVENTS AND WORKSHOPS

Both halls are available for hire subject to any restrictions in place at the time. To enquire or make a booking, please contact the bookings secretary Margaret Barter (01722) 780471

BISHOPSTONE PLAYGROUP

(Formerly known as the Baby & Toddler Playgroup)

For general information about the Bishopstone Playgroup, find their Facebook page *Bishopstone Playgroup*, or contact Kate Pendlenton on 01722 780655 or email: kmpendlenton@hotmail.com .

“EXTEND” EXERCISE CLASSES

For information about these exercise classes contact Jenny on 01722 780863, email: jennyberwynjones@yahoo.co.uk

PILATES AT BISHOPSTONE

Contact Claudine on 07788 587937

YOGA WITH HANNAH

For more details please contact Hannah Stocker on 0773 856 1888 or by email: yoga_with_hannah@outlook.com.

SARUM SPINNERS AND WEAVERS

For more detail about the group please contact Les Smith on 01722 780761.

Village Hall 100-Club Winners

	£50	£20	£10
Aug 21	C Sexton	Lord Head	M Barter
Sep 21	M Parry	A Stuchbury	M Barter
Oct 21	F Stimpson	G Brutton	J Barrett

First Friday Fun!

ALL are welcome to this Tea, Cake and Games Get-Together in the Village Hall. This is going to be the last one for a few months.

Why is it on?

We wanted to provide an opportunity for anyone in the village to be able to come and chat with people they already know, people they see might see out and about, or people they have not yet met.

We all know this is a friendly village with lots of interesting stories and experiences, but sometimes it is difficult to get to know who is who, and for people of different age groups to mix in the way that they did in the past when multi-generational families were more likely to live close to each other.

Do you have to play games?

No - but we wanted to have some multigenerational things to do, and a lot of us have found out about some good new simple games we can add to our Christmas lists. We are starting to spot the more competitive streaks coming out from all ages! Some of us are just happy to come to chat and eat cake.

Why should you come to this one?

This is the last First Friday Fun for a few months.

The Christmas Fair will be on the First Friday in December (which we know you will all be coming to).

We are then going to wait a few months and start it up again in the Spring. We have not had very many people from the different adult generations coming, and we are wondering if the possibility of school children spreading Covid is putting people off. We hope that by the Spring people will be more confident, and of course we will be opening the doors fully in a way that January and February won't allow, and use the car park as well.

There is no charge, but people have made donations that have covered the hall costs for the first two already, and most of the coming month, so please do just come along this month.

For further information, please contact Sarah Brough on 07825 442110 or Kate Pendlenton on 01722 780655.



Bishopstone Village Hall rates for private hire

Bishopstone Village Hall has 2 rooms that are available for hire for a wide range of functions. The larger room is ideal for children's parties with lots of space for running around. It can also accommodate wedding receptions, charity functions and large family celebrations.

The smaller room (The Memorial Room) is a good size for meetings and smaller gatherings.

The modern kitchen is spacious and fully equipped with an electric catering range, a professional 4 minute dishwasher, water boiler, hot cupboard, microwave oven, 2 fridges and a freezer, all suitable for professional caterers. There is also glassware, crockery and cutlery for over 80 people.

The hire charges include use of heating and electricity.

The rates are currently:

	Villagers	Non Villagers
Hire of both rooms (With full use of the kitchen)	£15 per hour	£20 per hour
Hire of both rooms (With tea making facilities but no other electrical kitchen equipment)	£10 per hour	£15 per hour
Full use of the kitchen <u>only</u>	£10 per hour	£15 per hour
Weddings – per event/day	£150	£250
Parties – per event/day	£100	£150

Broadband

An additional charge is made for use of the broadband connection of £6 per hour with a maximum of £25 per day.

Large projection screen

Use of this professional quality screen is charged at an additional £10 per event.

The hire period must include time to set up and clear away after the event.

For further information and bookings contact: Margaret Barter 01722 780471

Chalke Valley Community Support

POLICE

Call 999 in an emergency: an emergency is when someone is being threatened or at risk of getting injured, or a crime is in progress.

Call 101 for non-emergencies: such as reporting a crime that has already taken place, non-urgent incident, contacting local officers etc

You can also contact local Police as follows:

PCSO Matthew SMITH – matthew.smith@wiltshire.pnn.police.uk

PCSO Simon WARD - simon.ward@wiltshire.pnn.police.uk

PC James BARRETT - james.barrett@wiltshire.pnn.police.uk

PC Matt HOLLAND – Community Policing Co-Ordinator

CPTSouthWiltshire@wiltshire.pnn.police.uk (*e.mail address for general enquiries*)

Community Messaging – for emailed crime reports and local policing updates, sign up at www.wiltsmessaging.co.uk

Social media – for local policing updates follow us on Facebook

@salisburypolice and Twitter **@SouthWiltsCPT**



Sixpenny Handley and Chalke Valley Practice

Doves Meadow Surgery, Broad Chalke: 01722 780282

Broadchalke Surgery partially reopen for Prescription Collection

Sixpenny Handley Surgery: 01725 552500

www.sixpennydocs.co.uk



MOBILE LIBRARY

The Mobile Library is back in action and will be calling at The Styles in Bishopstone between 1115-1135 on the following Thursdays:

25 November, 23 December, 20 January



***Shop at the heart of the Community,
Owned by YOU, Run by YOU, Here for YOU***

w: www.chalkevalleystores.co.uk

e: info@chalkevalleystores.co.uk Tel: 01722 780998

OPENING HOURS

Shop: Weekdays 9am - 5pm (until 4pm on Saturdays)

Post Office: Monday, Tuesday & Thursday 9:30am- 1:30pm



The Chalke Valley Link Scheme exists to provide transport and other good neighbour support in a local, personal and friendly way to members of the Chalke Valley community who need it.

If you live between Bishopstone and Bodenham or Britford and need help getting to your surgery/hospital appointments, local shopping, or to visit family members in hospital, please phone **01722 718780** to reach our Joint Transport Coordinators.

There is no charge but you are invited to make a donation towards our administrative costs. Our co-ordinators are all volunteers and there may be occasions when you will be asked to leave a message which will be answered as soon as possible. Our drivers are volunteers too, so please give as much notice as possible so that we can find a volunteer who is available.

Registered Charity No 1076335

Queen's Award for Voluntary Service

Staying in Touch

STaB magazine is a vital source of communication in the village, keeping everyone informed as to what is happening locally. However, the Covid-19 pandemic has highlighted the fact that the situation can change very rapidly. To keep up to date with what is going on there are two other important sources of information in Bishopstone - the village website and our own WhatsApp network.

The village website – www.bishopstone-salisbury.co.uk is updated in real time and carries all the latest news on issues that affect the village.



The Bishopstone Network is a WhatsApp messaging service that has more than proved its worth during the pandemic. Information can be instantly shared to your mobile phone about support services being provided in the village and on a variety of other matters – everything from the length of electricity black outs to what is available from the White Hart take-away service! You will need to download the App to your phone and

then contact Piers Edwards (piersgedwards@gmail.com or 01722 780079) or Kate Pendlenton (kmpendlenton@hotmail.com or 07769202200) and ask to be added to the group.

Bishopstone Ladies Group

Unfortunately our group has not been able to meet since February last year because of the pandemic. Although we hope to be able to get together in the future, sadly, due to the ongoing situation, the committee feel it inappropriate to meet for the time being. There will, therefore, be no meetings for the rest of 2021. We shall monitor the situation and let you know when we feel it is safe to restart.

Salisbury Foodbank

This month we had 7.26 kgs of donations. Thank you all.

With winter approaching there will be more call on the foodbank for help, with the £20 cut from income support and the rise in gas and electricity costs there will be more single people and families pushed into hardship.

So if you can, please continue to support this very worthy cause. You can donate food at most of the supermarkets now but I am still happy to take along anything that is brought to me here at home, or left in our lovely church.

Items they are short of and asking for at the moment:-

Long Life Fruit Juice
500g Rice
Dried Milk
Mash Potato
Packet Pudding, Angel Delight
Tinned Fruit
Tinned Veg
Women's Deodorant
Shaving Gel
Conditioner

Small Bottles of Squash
UHT Milk
Coffee
Sponge Pudding
Chocolate Bars
Jam
Toothpaste
Men's Deodorant
Shampoo

They have Pasta coming out of their ears, so please try to buy something from the above list.

Christmas will be the next cause for many people to feel anxious, especially those with families. It should be a time of happiness for us all so please, think of those who are less fortunate and help to make theirs a Happy Christmas too.

Thanking you in advance.

Best wishes

Judy Barrett (01722 780306)



Firework Night at the White Hart

Come and join us at
The White Hart



on Saturday 6th November.

Fireworks will start at approximately 7pm.

Display put on by the brilliant Windwhistle Pyrotechnics.

Free entry however any donations would be gratefully received
and will go towards our annual Christmas Fair.

There will also be a BBQ and, weather permitting, a Bonfire.



Bishopstone Ultrafast Broadband Update



I expect those of you who signed up to wanting a full-fibre broadband connection are wondering when it is going to arrive. I am very pleased to announce that after a galling, 6 weeks wait, the Government department for Digital, Culture, Media & Sport (DCMS) approved our application on Friday 15th October.

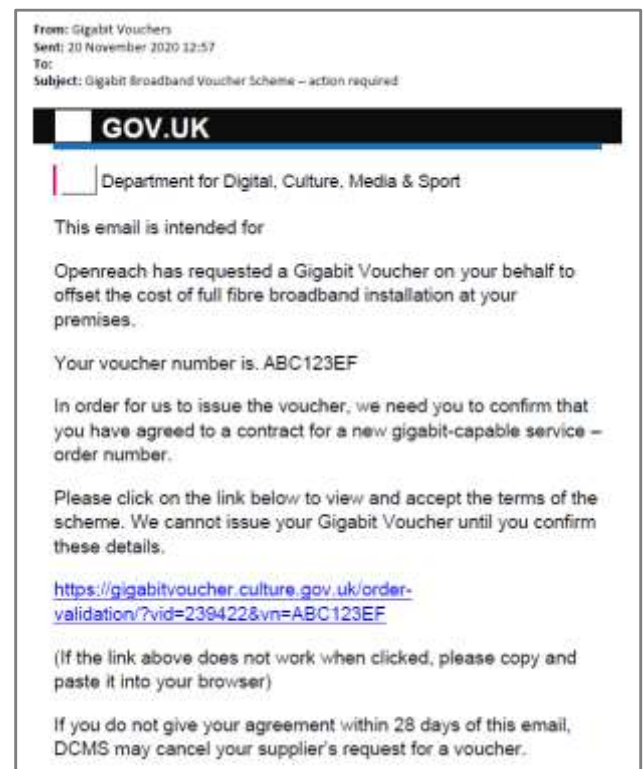
What Happens Next?

Our website has the full process but here are the next steps:

You will very soon receive an email from the DCMS that will look something like this. It is asking you to confirm you want an FTTP connection AND you will take out a new fibre contract with the ISP of your choice when the installation of the network is completed.

All you have to do is click on the blue link text which will take you to a web portal where you enter your details. It will take less than a minute to do.

When you reply in the positive your Government voucher, that will pay for the installation, will be activated. Once enough vouchers have been activated Openreach will begin installation work.



The sooner you reply the quicker the installation will begin.

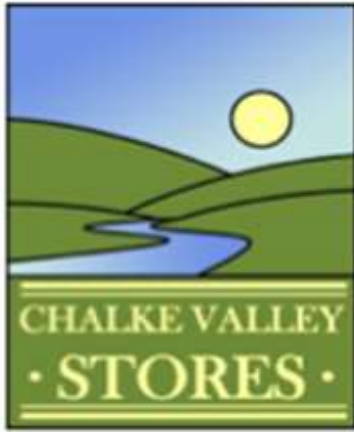
We are hoping to be able to email you all when we know the date the emails from the DCMS are expected and will include all the information we have to help you reply.

For more information, please visit our website:

www.bishopstone-ftp.uk

If you **can't find out there what you want to know** there then please contact:

Toby Mills – tel. 781168 | toby.mills@bishopstone-ftp.uk



***Shop at the heart of the Community
Owned by YOU, Run by YOU, Here for YOU.***

w: www.chalkevalleystores.co.uk | e: info@chalkevalleystores.co.uk | Tel: 01722 780998

OPENING HOURS

Shop: Weekdays 9.00am - 5pm (until 4pm on Saturdays)

Coffee Shop: Week days 10am - 3.30pm (until 2pm on Saturdays)

Post Office: Monday, Tuesday & Thursday 9.30am to 1pm

Christmas is coming...

Christmas Poultry can now be ordered, we highly advise early reservation. Check with Hub for details of costs and to place your order.

A full range of Christmas produce is starting to be stocked in the Shop, including an impressive display of Tony's Chocolate. There will be more stock arriving in the coming weeks...

From November the Coffee Shop menu will include special Christmas dishes. Think mince pies & Christmas sandwiches!

Village shop of the year award

The Shop was nominated for the South England Prestige Awards 2021/2022 in August. It was announced in late September that we have been chosen as Village Shop of the Year.

Congratulations to Tony, the staff and all the volunteers for making the Shop such a success.

AGM

Our Annual Members Meeting was held on October 22, when thanks were given to retiring members of the Committee: Will Hilary, John Lace, Hilary Brown, Hugh Pelly, and Linda Walton.

A warm welcome was extended to Antonia Allen, Claire Donne; village representatives for Broad Chalke and Bowerchalke, and to Julian Thomas who succeeds Linda as Treasurer.

Wine & Cheese Evening

On 10th November we will be hosting a wine & cheese evening for Afghanaid starting at 6pm. Can you tell the difference between a £5 and a £50 bottle of wine? Our panel of wine experts will reveal all. Tickets are now available at The Hub, pre-booking is essential as numbers are strictly limited.



CHALKE VALLEY SPORTS CENTRE

sport for all

**SPORTS
SCENE
NOVEMBER
2021**

It has been great to see the Sports Centre operating with a full calendar of sports and recreational activity over recent weeks and to see the return of the Chalke Valley Challenge. We have also been able to support the Flu clinics run by the GP practice by providing the staff rest facilities. Petanque has moved indoors on Friday evenings and the new Club now fully established, as is the new Pickleball Club on Wednesday evenings.

As the evenings are drawing in and the opportunity for outside fresh air sport is reducing have you thought about coming along to the floodlit evening sport sessions over the autumn/winter months to keep yourself in trim? Tennis Thursdays 6pm to 8pm (in most weathers) and Pickleball Wednesdays from 6pm. There are also plans afoot for a Saturday outdoor Petanque session. If you are interested contact chalkevalleypetanque@gmail.com we are offering soup and a roll to keep you warm!

You may have seen our advertising banners around the village. We are an ideal venue for all sorts of events and, whilst the Centre is a Members Club, facilities are available to hire by anyone, whether a Member or not. The Multi Use Games Area is great for children's outdoor birthday activities, or we can provide facilities for a 5 a-side football party on the sports field.

Just as a reminder, our website contains all the information you need to know about the sports and activities and the times they take place. You can also follow us on Facebook and, most importantly, if you want to try an activity, just get in touch with one of the Club representatives, you will be made very welcome.

Chalke Valley Sports Centre Contacts:

Chris Rothwell: Interim Chairman: chrisrothwell@hotmail.co.uk
Tel 07552159369

Michaela Johns: Treasurer: ivonhouse@hotmail.co.uk **Tel: 01722 780915**

Edward Fry: Deputy Chairman: Edward.fry2@btinternet.co.uk

Simon Dawes: Secretary: simon@dawesfamily.co.uk

Sports Centre general email: Info@chalkevalleysportscentre.co.uk

Lockdown Arts and Crafts Exhibition

On Saturday 25th September 19 exhibitors from Bishopstone gathered in the Village Hall to display the arts and crafts that they had been learning and practising during lockdown. The hall was then opened to visitors who came to view the wide range of exhibits and enjoy refreshments and a chat while they browsed.

The day was ably organised by James Thompson whose entire family were there with their artistic creations. The Exhibition included work ranging from photography to quilting, needlework to lino-cutting, and painting to tarot readings; an incredible selection of talents from one village.

Huge thanks must go to James and the team of volunteers who set up the hall and refreshments, and served tea, coffee and delicious cakes all day. Thanks too to all who visited.



*Photos by
Marilyn
Smith,
write-up by
Kate
Pendleton.*



Posting Overseas has Changed!

Are you sending gifts or parcels to friends or relatives overseas (excluding Northern Ireland)? You now need to fill in a customs form items of all sizes, excluding documents or cards. Please follow the guidance below for more information as this will save you time at the Post Office counter especially if you collect the forms you need in advance. Customs forms are now mandatory for all gifts and goods sent to a country outside the UK, except when sending items from Northern Ireland to the EU.



Please use BLOCK CAPITALS so it can be machine read.

- Select the nature of goods for the contents, i.e. Sales of Goods, Returned Goods etc
- Describe each item accurately e.g. 'Men's cotton shirt'. Generic descriptions such as 'clothes', stock numbers, or print/design descriptions are not acceptable.
- For each item type (commodity) described, provide the total quantity, weight and value. Write the currency if it is anything other than GBP, for example CHF for Swiss Francs.
- The overall totals should be added in the boxes.
- Sign and date the form. This confirms your liability for the item in terms of the contents of the parcel.

Write your name and address on the form if there's an allocated space for it, otherwise it should be written on the top left corner of your package. This is required by overseas customs authorities and will help us to return your item if they won't allow it into their country.

For items with a value over £270 use customs declaration CN23.

If you don't complete the relevant fields below, it's likely your item will be returned or delayed. Customs forms require full attention, be careful when filling them out and include all mandatory information relevant to you and your item. You can always ask a member of staff in branch if you have any questions.

- Sender's name and address - mandatory
- Type of Contents and accurate content description - mandatory
- Value, quantity and weight of each item - mandatory
- Total value, quantity and weight - mandatory
- Business customers only - HS Tariff number
- and GB EORI number or VAT registered number - mandatory for businesses only
- If using a CN23: recipients name and address - mandatory

If you are not sure and would like some advice, please do visit your local Post Office or look at the following link online:

<https://www.postoffice.co.uk/mail/customs-forms>

Coombe Bissett Stores and Post Office

Monday to Friday 7am to 6pm, Saturday 7am to 1pm

Are you sending a parcel ABROAD?
New customs forms are now in use

- Ask us if you are unsure what you need to do
- Post in plenty of time - don't wait until the last posting date
- Write clearly on your parcel
- Leave plenty of space for extra labels
- Don't use string
- Parcels under 2kg are significantly cheaper

Uncertain what you need to do?
Ask us at Coombe Bissett Stores
and Post Office, we can advise you.

Coombe Bissett Stores • Homington Road • Coombe Bissett • SP5 4LR • 01722 718852



Shop and Post Office hours

Monday to Friday 7.00 am – 6.00 pm

Saturday 7.00 am – 1.00 pm

Closed Bank Holiday Mondays





Coombe Bissett CE VA Primary School

"Soar on wings like eagles, run and not grow weary, walk and not be faint" Isaiah 40:31

Bishop's Opening of Community Garden

On Thursday 23 September the Bishop of Ramsbury, Andrew Rumsey, blessed and opened the New Coombe Bissett Community Reflection Garden. Based in the grounds of Coombe Bissett Primary School, the Reflection Garden has been brought to fruition by funding from the Chalke Valley Churches, Wylde Valley Arts Society, Wiltshire CEP Arts grant, Dunelm, Donations from 'this is eco', Topps Tiles and local tradesmen.



We are so thankful for the time and effort of staff (in particular Naomi Bowers, Arts leader, and Nikki Forster) and community to assist in building this asset. The children were involved in stepping stone and mosaic workshops to create decorative stones and 8 mosaic boards representing the school values (care, commitment, creativity,

bravery, brilliance, belief), the 4 seasons and the School crest. There is a beautiful water feature in the middle so the children/community can place prayer pebbles around it. This is the final stage of the ongoing well-being project.

The first stage involved the building of the Cedar Room, with the assistance of a Ministry of Defence £10K Grant and local business contributions. The octagonal building sits separately to the rest of the school building, to give the children a space where they can have some quiet time. As a small school we have very little space so what we wanted to do was provide a space where we can support the whole child. It's somewhere that the children and staff can use in a small group, or one-to-one, or whether they just need that extra bit of time and emotional support.



The next phase involved developing an extended play area with all-weather surface to allow access to all areas of the project all year round and extend the outdoor education space.

REAL TEAM EFFORT AT COOMBE BISSETT PRIMARY: From Day 1 the school also had plenty of support from local businesses and families connected to the school. People have also given up their time to help with the landscaping around the Cedar Room and Garden. Project Co-ordinator Kirsten Webster says it's been a bit of an educational tool for the children too: "The Octagonal Cedar building, the Reflection garden, and the surrounding area, has given the children a focus for their fundraising and arts/eco activities this last few years and they are planning to develop it further as the garden grows and develops, further building upon their school 'Eco Curriculum'. One of the key objectives of this project was to grow the relationship of the school in the local community. Children and families involved in this project now spans 8 years, each providing some personal touch in a way of painted pebbles, painted or tiled mosaics and planting. We are extremely blessed.'



In this photo we have: Children from the school Collective Worship team, Barbara Turvey & Dr Derek O'Callaghan (Chairman) from the Wyllye Valley Arts Society, Canon Jenny Taylor, Bishop of Ramsbury, Kirsten Webster (Project Co-ordinator).

Howard Phipps - Wood Engraver

Many residents of Bishopstone will be familiar with the work of Howard Phipps, not least because he was kind enough to allow the reproduction of his engraving of Faulston Tower to accompany the article on that subject in the June 2021 edition of STaB. In conversation with Howard when asking for his permission I was struck by his passion for the chalk downs and droves above our village and thought the readers would be interested to know more about him, and about the fascinating process of wood engraving.

Howard is one of this country's leading contemporary wood engravers. He lives in Coombe Bissett and I visited him at his home and workshop in September to find out more about the world of spitstickers, bullstickers, scorpers and gravers – some of the many tools used in this most English of arts. Originally from Wales, Howard studied Printmaking and Painting at Gloucestershire College of Art in Cheltenham.



Howard at work in his studio in Coombe Bissett.

After postgraduate study in Brighton, he taught in Plymouth before moving to Salisbury in 1980, where he combined art with teaching. He developed an interest in wood engraving before it became fashionable in the 1980s.

A development of the woodcut block, made by cutting the soft side grain of a plank, the art of wood engraving was invented in Britain in the late eighteenth century and developed by Thomas Bewick of Newcastle. By engraving on end-grain hardwood such as boxwood, with tools comparable to those used by engravers of metal, it enabled artists to create finer images.

Bewick's ideas were picked up by other artists. Wood engravings enjoyed significant advantages over metal engravings in the printing business as the wood blocks were made type high so that both text and illustrations could be inked together. In the 19th century wood engraving lost its way in part, when artists only made the preliminary drawings, these were transposed on to the blocks by trade engravers. The resulting illustrations, although technically brilliant, could often seem mechanical in their execution. As printing technology moved on, artists, especially in the 1930's, returned to interpreting their own drawings on the wood block, experimenting more, and bringing fresh life to the medium. These they exhibited, and in addition the Private Press movement developed by men like William Morris, commissioned illustrations for beautifully printed books. FinePress publishers, such as the Whittington Press, continue this tradition specialising in small runs of beautifully produced books of poetry and prose with accompanying wood engravings.



While Howard has published a number of works through the Whittington Press, most of his beautifully detailed engravings are printed at his home on an 1862 Albion hand press, pictured left.

However, the printing is the end of a process which begins with a watercolour or pencil sketch of his chosen subject. This he mounts on a board and views in a mirror while he works on the engraving – otherwise the final print would appear as a mirror image of the original scene.

With burin-type tools, the mirror-smooth block of boxwood is engraved with a wide range of linear and textural marks that will appear as white

against the black uncut areas when the relief surface is rolled with ink and then printed. To allow him to see the image he is creating more easily, he darkens the block prior to engraving, allowing the engraved areas to show up in the light yellow of the boxwood. In effect he is drawing with light rather than making dark marks on paper as someone producing a pencil sketch would do.



A wood engraving of the wood engraver at work!

Although not from Wiltshire originally, Howard loves the softness of the chalk downs, relishing the intimate feel to the unspoiled and



unploughed landscape, particularly in winter when the low light creates interesting textures and shadows:

‘My art is a response to experience: places I know well and have come to have meaning for me, such as the chalk downland of Wiltshire and Dorset. There is a sense of place in this ancient rolling landscape which often reveals hints of man’s impact upon it.’

Woodcut - Footbridge at Bishopstone



Howard also creates linocuts

Howard has always been attracted by trees and trackways – the way the eye is drawn into the landscape by the droves and green lanes of the downs. One favourite spot is the row of ancient beeches which line the stretch of Roman road above Faulston, a wood engraving of which features on the front cover of this edition of STaB:

‘The trees on the Ox Drove are extraordinary, offering interesting shapes and light. My pictures are all about the light and the patterns it makes.’

Elected a Royal West of England Academician (RWA) in 1979, Howard is also a member of the Society of Wood Engravers and an Associate of the Royal Society of Painter Printmakers. His work is to be found in numerous collections, including the British Museum, Salisbury Museum, the Ashmolean Museum, Oxford, and the Dorset Country Museum, as well as the Yale Center for British Art in New Haven, Connecticut, and the Heilongjiang Museum of Art in China.



Printing a finished linocut

Howard's work is available for sale through his website <http://howardphipps.co.uk>.

His work can be seen at Salisbury Museum in a solo exhibition alongside ‘Cutting it Fine: The Art of the British Wood Engraver’ which runs from 16 Oct 2021 – 16 Jan 2022. In addition, Howard is giving a demonstration of his work at the museum on Saturday 30 October from 2-4pm and hosting a walk through on Saturday 13 November and Saturday 27 November from 2.15pm – 3.15pm. Pre-booking is required for the walk-throughs.

Rambling with Jazzie again...

Another month and quite a change in the weather. Jazzie has been taking me for walks as usual, and much enjoying the stubble and the open fields again. As she is over her first season, she is free to run whenever possible. She has also learnt to WAIT for me and then put her lead on again when we approach roads! She is very careful with traffic, and always comes close whenever she hears a car!



I must thank all those who entered for the Lockdown Arts and Crafts Exhibition. There were about twenty entries and 19 people displayed their arts and crafts. The embroidery and samplers were superb and much admired, with the beautiful quilts. The spinners showed us how to do it, and we appreciated their results. The paintings and photographs on display were so varied and interesting, and some sales were achieved. Thank you too, to all the villagers who came to have a look at what was on show

However, I am so very sorry that some folk suffered from Covid the following week and are very glad to hear that all have now recovered. Despite Government advice, Covid still stalks us all, so follow the medical advice. We suffered too, remained at home, had daily oximetry readings to report for a week!! Meanwhile, Jazzie enjoyed her walks with kind neighbours and the lovely Pebble!!



Life is back to normal now, although we are being careful. We see the family again and can even go shopping. We have not been guiding in the Cathedral for a month but have enjoyed singing in our church again. I have brewed more beer (only for family use) and baked more bread again, and now feel like painting once more. Annie remains sewing and tapestrying as usual, and the autumn garden keeps us very busy!

We are out and about again, and Jazzie has met even more friends during the recent sunny weather. I fear that is over now, and she will have to get on with the wet and the cold. I hope I can cope too!

Don't forget ... Poppy Appeal from 30 October to 14 November door-to-door, and our Remembrance Service at 1050 am on Sunday 14th November in the church.

James Thompson

Fovant Badges Society



As restrictions from Covid eased FBS with the Royal Signals embarked on a project to restore and re-chalk two of the ten Fovant Badges: The

Centenary Poppy, (CENT), sadly lacking in chalk from its original construction, and the Royal Signals Badge (ROYS), left until 2020 to be renovated as a mark of the Centenary of the formation of Signals and the 50th anniversary of the creation of the ROYS badge. We all know what happened in 2020.....

After some detailed planning over this summer, and some re-profiling marker-spray painting to correct the profile 'drift' over the years, Cpl Matt Mills of 11th Signals and his team of volunteers arrived mid September and began the weeding and preparatory works on ROYS, courtesy of Ed and Sue Williams of East Farm. Over the next three working days Matt and his men and women then shifted the 23 tones of chalk, placed from our stockpile into two borrow piles directly above the two Badges by Kevin Callacher of KDC Landscaping, Dinton, ably assisted by Martin Wallis (who was allowed to drive the dumper!). CENT was knocked off in little over a morning's hard work in splendid, almost ideal weather, and then ROYS was tackled over the following afternoon and the next two days, rebuilding revetments, profile cutting and filling, and then re-chalking.



The white scars around these two badges will soon be absorbed by the herbage and the chalk will consolidate naturally into a cementitious weathering skin after a few rain/sun cycles.



We are always keen to hear from people who would like to help publicise, maintain, join a working picnic, or generally help out with FBS' work, be it adults with time and inclination, 30 degrees in our case, or children's school projects.

Our web site, and that of the village, give details.

www.fovantvillage.com

Or use fovantbadgeshelp@gmail.com to get in touch. L.B.

photos credit: JC Photography Ltd.


Local Charity Events

Bring your friends to
Parkinson's UK
(Salisbury Branch)
Coffee morning

on

Saturday, November
6th 9.30 am to 12 o'clock
at St. Thomas's Church,
Salisbury

Produce stall and tombola.




Portrait of Afghanistan:
The Chalke Valley's Experiences
of Modern Afghanistan

Broad Chalke Village Hall
Tuesday 9th November, 7:00pm

Entry to the event is free but we encourage donations to Afghanaid. You can donate to them directly by scanning the QR code.

For more information:
✉ Sharon.ibbotson@gmail.com
☎ 01722 780708



Afghanaid
www.afghanaid.org.uk



BROAD CHALKE VILLAGE HALL **Surviving Papua New Guinea** An illustrated talk by **Charlie Walker**

Saturday 13th November 2021

7.30 pm: Prosecco and eats Cash bar
8.00 pm: Illustrated talk 9.00 pm: Finish

Charlie's challenges included dense jungle, monsoon rains, tribal disagreements, white water rapids, crocodiles and lots more..

Tickets: £15.00, children £5.00 include glass of prosecco or soft drink and eats.

Available at the Hub Broadchalke or from Committee members.

Charity Christmas Tree Collection



8th - 10th January 2022

Leave the effort of collecting your tree to us!

**Volunteers collecting in postcodes
SP1, SP2, SP3, SP4, SP5, SP6, SP7
(new for this year) and SP9.**

Register your tree at
www.charityxmastreecollection.com
by the 4th January 2022

Proudly sponsored by

Boatwrights 
Estate Agents

After costs 90% of all monies raised will go to Salisbury
Hospice Charity and the remaining 10% to local charity
Serve On

Recipe of the Month - French Onion Soup

By Cally Edwards

A good old fashioned French onion soup is comforting and full of flavour on a cold winter's day. Can be made in advance and heated up. Serves 4

Ingredients

1kg white onions, thinly sliced
2 tablespoons olive oil
50g butter
2 cloves garlic, crushed
½ tablespoon granulated sugar
3-4 pints of good beef stock
1 glass of white wine
2 tablespoons of brandy (optional)

To Serve

Baguette cut on the slant to pop on the top of the soup, toasted
Croutons - older slices of bread cut up into small squares, olive oil
Gruyere cheese

Preheat the oven to 180°C/ 350°F / gas mark 4.

First make the croutons by drizzling some olive oil on a baking tray and cutting up the older slices of bread, tossing the bread in the oil so the bread fully soaks up the oil and then place in the oven. Keep an eye on these as they can suddenly burn - but should take 15 mins to turn a golden brown and crunchy. Once done, put to one side. When cooled, they can be kept in a tupperware box.

Place a large heavy saucepan or casserole dish on a high heat and melt the olive oil and butter together. When this is hot, add the sliced onions, garlic, sugar and keep turning until the onions have softened and a few may have turned dark. This takes about 5-10 mins. Reduce the heat and leave the onions cooking very slowly (you don't want them to burn) for 20-30 mins by which time the pan base will be covered with a rich, nut brown, caramelised film.

Pour in the stock, white wine, season and stir with a wooden spoon to scrape the base of the pan well. Turn up the heat so that the soup simmers and as soon as it does, turn down the heat again, check for taste and if you're inclined to do so, add the brandy.

Pop the saucepan into a low oven with a lid for 1 hour for the soup to really develop its taste.

Once ready to serve, dot some croutons into the soup, cut the baguette into slices on the diagonal, toast them, pop on top of the soup, add some grated gruyere on top of the baguette slices and serve.

Puzzles and Activities

By Cally Edwards

Code Word

4	26	23		20	18	15	5	22		⁴ M	17	3
22		26		21		2		4		15		26
4	26	10	11	15		15	24	22	18	18	17	8
15		23		18		22		18		26		3
	16	14	8	25	1		26	3	14	9	22	
12		9				11		22		9		22
10	18	22	22	⁹ L		26	8	8	15	1	22	25
26				26		17		10				14
18 B	22	3	14	4	22	8		22	6	26	10	23
20		15		7		23				18		12
	19	17	26	12	11		12	7	22	10	13	
12		18		11		25		26		11		2
10	15	4	7	26	18	22		9	¹⁵ O	16	22	18
26		22		25		26		22		26		22
2	26	23		22	9	25	22	18		1	22	16

1	2	3	⁴ M	5	6	7	8	⁹ L	10	11	12	13
14	¹⁵ O	16	17	¹⁸ R	19	20	21	22	23	24	25	26

15 Autumn Forest School Activities



1 Build a den



2 Make leaf crowns

3 Make a stick raft

4 Bake apples and chocolate on the fire

5 Paint with blackberries



6 Go foraging



7 Make a stick man

8 Make a habitat pile to provide shelter for mini-beasts

9 Make some leaf art

10 Make a maze



11 Make damper bread

12 Drill conkers



13 Conker finding and sorting



15 Bramble weaving



Read full article at
thepracticalforestschool.com

Sarah's Gardening Tips for November

1. Protect roses from windrock by pruning them by one third. This will stop them swaying in strong winds.
2. Lift parsnips after first frosts.
3. Stake top heavy brassicas and draw up soil around them to stop rocking in the wind.
4. Divide mature clumps of rhubarb.
5. Build a cold frame to protect plants over winter.
6. Net ponds to prevent leaves falling into them.
7. Use the last of the dry weather to paint fences and sheds.
8. Take stock of this year's garden and make a few notes or sketches for next year.

*The garden suggests there might be a place where we
can meet nature halfway.*

Michael Pollan



Question: What is a Tonka?

(Answer on p53)

Sarah's Garden Services: 07971 909 548

Email: mygardenservices@outlook.com

Follow us on Facebook and Instagram @sarahsgardeningservices



CHRISTMAS SET MENU

2 Courses - £22.00

3 Courses - £26.00

Starters

Truffle Infused Parsnip Soup

Chilli and Pernod Spiked Tomatoes with griddled King Prawns and Toasted Sourdough

Venison & Black Pudding Croquette with Peppercorn Dip and Baby Watercress

Mains

Traditional crown of roast Turkey served with Sage & Garlic
Stuffing, Pig n Blanket and Rich Gravy

Roasted Salmon Fillet with a Prosecco & Caper Cream Sauce

Root Vegetable Wellington with Parsley Sauce

Braised Beef Brisket with Jerusalem Artichoke Gratin & Red Wine Jus

All served with Roast Potatoes, Roast Parsnips, Honey Glazed Carrots, Braised Red
Cabbage & Brussel Sprouts

Desserts

Clementine & Mulled Spiced Crème Brule with Ginger Bread Biscuit

Christmas Pudding Sundae
(Layers of Christmas pudding, Morello Cherries, Honey & Fig Ice Cream
topped with Brandy Whipped Cream)

Sticky Toffee Pudding with Salted Caramel Sauce & Clotted Cream

Book now for Tuesday, Wednesday & Thursday (Lunch or Evening) and get £3.00 off when buying 3 Courses



Giving Peace Of Mind



Call Jessica Johnston
on 01722 410664

St Mary's Chambers, 51 New Street, Salisbury, Wiltshire SP1 2PH
t: 01722 410664 e: mail@sampsoncoward.co.uk
www.sampsoncoward.co.uk



BECAUSE YOUR FAMILY MATTERS

Your family is the most precious thing. You want to protect your family and make sure your family is looked after when you are no longer around.

We specialise in helping families plan for the future - including supporting them with Wills, Trusts and Lasting Powers of Attorney.

We are offering a **20% discount**
on our standard fees for Wills to those booking with
Hannah Goodeve or Bethan Creasey.
Please quote 'STaB Parish Magazine' when contacting us.



Hannah Goodeve



Bethan Creasey

**PARKER
BULLEN**
SOLICITORS

#HereForYou

01722 412000

www.parkerbullen.com

NEW Garage (Harnham) Ltd

01722 321 330

Salisbury Original Car Care Clinic
Vehicle wide diagnostics, whatever
the problem, we have the solution

- ◆ All Auto electrical work undertaken.
- ◆ Class 3, 4 & 7 MOTs with Class 1 and 2 available on request.
- ◆ Air conditioning services carried out.
- ◆ Lease work undertaken.



NOW OFFERING PAYMENT ASSIST

Pay just 25% of your bill today
Spread the remaining cost over the next 3 months
NO FEE NO INTEREST NO CATCH



www.newgarageharnhamltd.co.uk

RAC
Approved Garage



BASED IN FOVANT

**01722 714308
07541 358570**

- Local
- BPCA trained
- RSPH qualified
- Sensible pricing
- Fully insured
- Reliable
- Discreet
- Evening & weekends



www.greystonespestcontrol.com

michael@greystonespestcontrol.com

NEWBOURNE FARM



COMPOSTING

A local, family run business based in Rockbourne since 1995, offering green waste disposal and the sale of top quality accredited topsoil and compost.

On site processing of materials produces excellent screened 10mm top soil, landscaping compost for domestic and commercial use and agricultural spec compost.

Local delivery available for bulk bags or loose loads.

For more information about our products please contact

Rod 01725 518673 / 07896 544197 or

Andy 07766 163203

www.newbournecompost.co.uk





THROOPE DOWN CO-WORK

OPEN MID-MAY CALL OR EMAIL FOR FURTHER INFORMATION



About

Modern co-working space equipped with super-fast wifi.
Perfect for remote workers, start ups & entrepreneurs looking for a change of scene and a thriving community.



Includes

- hot & fixed desk
- high speed wifi
- meeting rooms
- free carparking
- printing facilities
- free refreshments

info@throopedownco-work.com

www.throopedownco-work.com

+44 7967 588 326

Throope Down CoWork, Blandford Rd, Coombe Bissett, Salisbury SP5
4LN

Who ate all the pies... and all the quiches?

Jon Thorner's pies and quiches are far too yummy, we can't resist them when we're busy and we just want a really tasty meal without any effort. They're a fairly new supplier for us, and their pies and quiches are already flying off the shelves. **Try them for yourself!**

- Lovely crisp pastry, the base is not at all soggy
- Many different flavours
- Small 200g, medium 400g and large 600g sizes
- Anything else you need? Ask us, we can help.



Coombe Bissett Stores • Homington Road • Coombe Bissett • SP5 4LR • 01722 718852



Shop and Post Office hours
Monday to Friday 7.00 am – 6.00 pm
Saturday 7.00 am – 1.00 pm
 Closed Bank Holiday Mondays



TATNER and CO

TRADITIONAL AND MODERN UPHOLSTERY

Our bespoke upholstery services include:

Dining Room Chairs	Roman Blinds	Campervan seating and Rock and Roll beds
Arm Chairs (including Parker Knoll)	Curtains	Classic car seating
Outdoor/garden seating cushions	Scatter cushions	Caravan and motorhome seating
Bench seating (kitchen, bar and restaurant)	Box Cushions	Ottomans and storage boxes
Footstools (including made to measure stools)	Headboards	

Contact Michelle Tatner on :

MOBILE : 07968 842525

Facebook : Tatner and Co

EMAIL: tatnerandco@gmail.com



Instagram: tatner_and_co



EBBLESIDE BUILDING LTD

Extensions – Property restoration – Groundworks
Bricklaying – Carpentry – Roofing – Plastering – Tiling
Traditional lime works – listed building works – Kitchens –
Bathrooms

All aspects of building work carried out

Tel: Russell **07463780938**, Campbell **07976438752**

Email: campbell.mcculloch@tiscali.co.uk, russfoss19@aol.com,

Registered in England & Wales No: 11291245

Vat reg no 308159701

Registered office: Ebbleside, Stratford Tony, Salisbury, Wilts, SP5 4AT

Land with Roadside Access Wanted

Parcel of rural land (between 0.3 and several acres) with roadside access wanted. Prices up to and in the region of £50,000 considered, size and location dependent. For more information, contact dominiqueprince15@outlook.com



GRAHAM DIMMER MOT CENTRE

MOT Tests on all types of vehicle up to 3,500kg
Servicing & General Repairs on all makes & models
Including **camper vans**
Specialist vehicle diagnostics
Air Conditioning repairs & re-gassing
Electronic Wheel Alignment
Free Courtesy Car

01722 328344

Avon House, Newton Road, Churchfields Salisbury, Wilts SP2 7QA

Email: info@grahamdimmermot.co.uk

www.grahamdimmermot.co.uk

S. WALLWORTH ELECTRICAL SERVICES LTD

FULLY QUALIFIED ELECTRICIAN, EMERGENCY REPAIRS

INSTALLATIONS – RE-WIRES, ELECTRICAL REPAIRS & TESTING

EXTRA SOCKETS & LIGHTING, NIGHT STORAGE HEATING, ELECTRIC SHOWERS

DOMESTIC & COMMERCIAL



FREE QUOTATIONS.

SIMON WALLWORTH

31 DEAN LANE, SIXPENNY HANDLEY

SALISBURY, WILTSHIRE

SP5 5PA

TEL: 01725 552545 MOB: 07826 928759

S.WALLWORTH@HOTMAIL.CO.UK

Sarah's Garden Services

Need help with your garden?



**Weeding, Planting, Mowing, Pond/Greenhouse Cleaning,
Holiday Watering etc**

No job too small!

07971 909 548

mygardenservices@outlook.com

Bishopstone based.

Wessex Contract Services

*Fencing, Landscaping,
Ground Care & Maintenance*

Lee Curtis

Tel: 01722780842

Mob: 07875018317

Email: lee@wessexcontractservices.co.uk



S P Restoration

Antique Restorers

We offer our customers a specialist service in

Antique restoration, French polishing, Veneering, Complete table re-polishing, Wood turning and Desk leather inserts.

We have a fast chair repair service, we offer a collection and delivery service with free estimates. You're welcome to come visit us at our workshop:

Unit 1 St Martin's Workshops
Manor Farm
Fifield Bavant
Broadchalke, SP5 5HT
01722 780584



For all your pest issues, Local, fully insured, fully qualified BPCA Member
Wasps, Rats, Mice, Cluster fly, Clothes Moth, Fleas, Squirrels, Bed bugs
Call now- **07711 259749** Email- **info@wiltshirepestservices.co.uk**



Lending with Heart and Mind

**Wiltshire Council fund a not-for-profit
loan scheme for homeowners and landlords*.**

**We understand the expense of maintaining your home and we work with
you to take the stress out of funding repairs, improvements or adaptations.**

**We see you as an individual, not a credit score. Our knowledgeable team of advisers
will guide you through the process of applying for a home improvement loan.**

**For a no-obligation assessment or more information
visit www.lendology.org.uk or call 01823 461099**

Heatherton Park Studios, Bradford on Tone, Taunton, TA4 1EU

*subject to eligibility

LITTLE BANKSIDE

www.littlebankside.co.uk

**Do you need extra space for visiting family & friends?
Self contained studio holiday let for 2 in Bishopstone.**

**Contact:
Hilary King
littlebankside@gmail.com
01722 780017**

Matthew Veale

Mobile Hairdresser Available 6 days per week

Reliable friendly service London Toni & Guy trained

Please call 01722 336821 or 07788 686829

Robin Higdon

Your local garage

Car repair, maintenance and pre-MOT preparation for all makes of car.

The Unit, Croucheston Farm, Bishopstone.
Phone: 01722 780606

Comfortable and cosy self-contained accommodation.

Little Bridge Studio

Bishopstone

Sleeps 3 plus cot.

Large open planned living space with wood burning stove.

Shower room and separate bathroom.

Contact: Alice Lyons - 01722 781137 or 07811455756

Jennie Gilbert - Pottery



I make Stoneware pots for the home. Perfect presents for you or your friends. You're very welcome to come and visit the workshop. I also run 2 day pottery courses, please call or email for details.

4 St. Martin's Workshops
Manor Farm
Fifield Bavant
Broad Chalke
Salisbury
SP5 5HT

01722 780402
www.jenniegilbert.com
jennie.gilbert@yahoo.co.uk

MADDY'S MENDING

ALL ALTERATIONS AND MENDING, FROM
BUTTONS TO BLINDS, CURTAINS TO CUSHIONS

No Job Too Small!!!

CALL MADDY ON: 01725 519504 OR
0777 4207 423

FREE COLLECTION AND DELIVERY

METAL ARTWORK

BLACKSMITHS & GENERAL ENGINEERS

01722 781212

www.metal-artwork.co.uk



Pregnant?

Looking for evidenced-based childbirth education?
Considering having an extra birth partner?

A doula can...

- Stay with you throughout labour and birth to help you achieve your specific choices
- Offer 1:1 breastfeeding and general feeding support
- Provide help at home for those first few days and weeks after birth

Doula Cally Edwards offers emotional and physical support to help you truly enjoy your pregnancy, birth and early days with your new baby



www.callyedwards.com



@doulacally



Yoga

SUNDAY MORNINGS

STUDY AND PRACTICE

at

Sixpenny Handley Village Hall

9.15am-12.30pm

19th September

17th October

14th November

12th December

Deepen your knowledge of yoga and enhance your practice. Give yourself time to experience and understand yoga more fully to bring greater benefit to your body and mind.

ALL ABILITIES ARE WELCOME

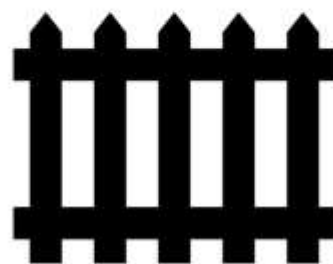
To find out more or book a place, please contact

Caroline Wilkinson • **01725 552209**

cj@wilkinsonyoga.co.uk • www.wilkinsonyoga.co.uk

BRITISH WHEEL OF YOGA TEACHER for 20 years

Ebble Fencing



- Bespoke Fences and Gates
- Professional Service
- 20+ Years Experience
- Fully Insured
- Free Quotations

07789 707959

www.ebblefencing.com

evolve

TREE SERVICES

call Stuart Larter for a free quote

07563 645043
01747 871753



Tree Specialist,
Fully Qualified and Insured

www.evolveetree.co.uk

FISH & CHIP VAN

EVERY THURSDAY

BROADCHALKE

CHALKE VALLEY SPORTS CENTRE
KNIGHTON RD FROM 4.30PM - 6PM

&

DINTON

ON THE CORNER OF HINDON RD
& SNOW HILL FROM 6.45PM - 8PM

FOOD ORDERS CAN BE PLACED

- ★ **PHONE/TEXT ON 07714438356**
- ★ **ONLINE VIA OUR WEBSITE OR FACEBOOK**
- ★ **IN PERSON AT THE VAN**

FOR MORE INFORMATION & FULL MENU PLEASE
VISIT WWW.FRYINGTUCK.CO.UK

WANTED

Local Family seeking to BUY
house in or around
Bishopstone

4+ bedrooms, Garden, garage

Circa £650-750,000

We have accepted an offer on our house so are immediately proceedable.

If you are considering moving, or are about to put your house on the market please do contact me on

Emily James Emwebb2021@gmail.com

Thanks in advance.



Picture Framing

We will frame: Photographs
Paintings, Prints, 3D objects e.g.
Sports Shirts, Memorabilia and
much more..

Call to visit our Coombe Bissett workshop:

01722 718695 or 07747 017221

Email: info@spireframing.co.uk

www.spireframing.co.uk

Be Inspired!

GRAY'S BESPOKE
STONE MEMORIALS
CARVING &
STUDIO INSCRIPTIONS

for more information visit:
www.grays-stone-carving.co.uk
 or call tel: 07766464048

DON'T MISS OUT! PHONE NOW FOR PRICES AND TO ORDER.
ROBERT HUXLEY: 07493 721317 OR TED COOMBS:
07970965040 OR EMAIL RHUXLEY1972@GMAIL.COM

**Gift
Vouchers
Available**

For a further £14 massage appointments can be extended by 30 minutes to include extra work on problem areas or a relaxing head & face massage

office@salisburyfencing.co.uk

Pod & Pip

Workshop Open

Wednesdays 10-2pm

Thursdays and Fridays 10-4pm

Saturday 930-1230

Fresh Flowers, Plants, Cards, Candles & Gifts

Pre-ordered bouquets for local
delivery/collection

Flower Workshops, Wedding & Funeral
Flowers

Ebble House, Stratford Tony 07766775869

www.podandpip.co.uk

Kevin Knight Clock & Watch Repairs

Free estimates given

Over 30 years experience

Tel 01722 331969

Mob 07900 928451

Email:

kevindavidknight@gmail.com

HIGH SPEC WINDOW CLEANING

Other Cleaning Services Include:

- Gutters
- Driveways
- Conservatories
- Greenhouses
- Solar Panels
- Fascias
- Patios
- Walls
- Cladding
- Paths

T: 01425 650894

M: 07879 426914

www.hs-cleaning.co.uk

Tim Saunders Plumbing & Tiling Services

Complete Kitchens, Bathrooms & Wet rooms
Tanks, Cylinders, Pumps, Valves & Radiators
Taps, Basins, & Toilets

Unvented hot water system installation, repair
& servicing (G3 certificated)

Stuart Turner approved installer

Disabled/assisted living zero vat
installations/conversions

Wall & floor tiling

Free advice and estimates

Emergency repairs. No call out fees

Fully insured

07772 610190

Email: timsaundersps@gmail.com

Advertising Rates

STaB - The Parish Magazine for the villages of Stratford Tony and Bishopstone

2020 Advertising rates – based on A5 page

STaB is delivered to around 300 houses in the parish, so your advert will reach many homes in the Chalke Valley. STaB is also published on the Bishopstone Village website: www.bishopstone-salisbury.co.uk

Price per year: 10 editions (Aug/Sept & Dec/Jan are joint editions)

Occasional adverts can be paid for at a pro-rata rate (1/10th of the annual rate per issue)

Full page 13x19cm £110 per annum	Half page 13x9.5cm £60 per annum	Quarter page Portrait 6.5x9.5cm £30 per annum	Quarter page Landscape 13x5cm £30 per annum
--	--	--	---

How to place your ad in STaB

1. Make a .pdf, .jpeg, or Word file of your ad, making sure it is the correct dimensions for publication (see table of sizes and prices above) and that it will reproduce well in black and white.
2. E-mail the file to Sarah Brough (ads.stab@gmail.com), stating what size of ad you would like, and how long you would like it to run for.
3. The deadline for publication is 5pm on the 20th of each month. Please send ads as early as possible.
4. When you have placed your order, you will receive an invoice with details of payment by cheque or bank transfer. Please pay within 14 days. Donations always welcome.
5. The Editor reserves the right to edit all contributions.

BISHOPSTONE PARISH COUNCIL

Councillors	Telephone
John Gibbon (Chairman)	01722 718551
Ali Thorne (Vice Chairman)	07768514133
Norman Barter	01722 780471
Anita Smith	01722 781213
Piers Edwards	01722 780079
Michelle Tatner	07968 842525
Simon Williams	01722 780905
Parish Clerk	
Mike Ash Lower Thatch Flamstone Street Bishopstone SP5 4BZ	01722 781044 bishopstoneclerk@btinternet.com
Further information is on the village website: www.bishopstone-salisbury.co.uk	

THE VILLAGE HALL COMMITTEE MEMBERS

Chairman - Norman Barter	780471
Treasurer - Francis Taylor	780316
Entertainments - Sue Taylor	780316
Event bookings - Caroline Ash	781044
Hall bookings - Margaret Barter	780471
Hall maintenance - Nigel Peasley	780713
Minute secretary - Virginia Middleton-Smith	780444
Members: Kathy Hales and Steve Tatner	

The Village Hall is an important resource and offers a venue for a wide variety of events for the benefit of all. The Hall is supported by a large group of dedicated local people in addition to the Committee. We hope you will support events whenever you can and if you would like to join the wider group of Friends of the Village Hall then please contact any member of the committee.

Bishopstone Village Website

www.bishopstone-salisbury.co.uk

The village website carries a wealth of information about Bishopstone. There are pages devoted to the church, the Parish Council, what's on at the Village Hall, meetings, clubs, local organisations and village walks. There are even digital copies of this magazine.

If you want to have any information included on the website please contact either

Mike Ash (bishopstoneclerk@btinternet.com)

Or Roger Stockton (rogerstockton@icloud.com)

Letters to the Editor

Letters to STaB are very welcome, but the views expressed may not be those of the editorial team or the Parish Church Council.

From our PCC, Philip Wilkinson:



A major survey and consultation to shape the future of policing in Wiltshire has been launched by the county's Police and Crime Commissioner.

Use Your Voice is one of the foundation blocks which commissioner Philip Wilkinson will base his new Police and Crime Plan on – the blueprint for

strategic policing and crime priorities until 2025.

“What has become apparent to me is the widening gap between what is important to the public and the police priorities,” he said. “Closing that gap is very much my responsibility. This consultation is the chance for every resident to have a say in what is important to them.”

The survey will remain open until midnight on 14th November. All feedback will be analysed and used to inform the draft plan. In December and January, both the PCC and DPCC will hold a series of events to gather feedback on the draft from interested parties.

There are a number of ways people can get involved – by filling in the online survey: <https://www.surveymonkey.co.uk/r/GS3CLXY>

or feedback can be emailed to pcc-consultation@wiltshire.police.uk. More ways to get involved are on the PCC's website: www.wiltshire-pcc.gov.uk

I thought this fantastic wall with beautiful shapes and colours would be a good place to discover for adults or children in the village. It could also be the an inspiration for any budding artists.

Marilyn Smith



STaB Selling Spot

Nearly new 3 ft mattress cost over £700
£100 (no offers)

Mrs. Sheila Nell 01722 781120



Services in Chalke Valley Benefice - November 2021


BCP = Book of Common Prayer (Traditional Language), CW = Common Worship (Contemporary Language)



Pattern of services during Lockdown restrictions.

Please follow all the safety rules in church. If the Covid 19 situation changes, services may be cancelled at short notice. Churches will normally be open for private prayer.

Please check your church noticeboard and weekly e-bulletin.

7 November 3rd Sunday before Advent	9.30am 11.00am 11.00am 11.00am 11.00am	Parish Communion (CW) Family Communion (CW) Family Communion (CW) Morning Service (CW) Morning Prayer (BCP)	Britford Ebbesbourne Wake Coombe Bissett Odstock Berwick St John	Jenny Taylor Catherine Blundell Jenny Taylor Adrian Taylor Lay Led
14 November REMEMBRANCE SUNDAY 	10.45am 10.45am 10.45am 10.50am 10.50am 10.50am 11.20am	Remembrance Service Remembrance Service Remembrance Service Remembrance Service Remembrance Service Remembrance Service Remembrance Service	Bowerchalke Broad Chalke Berwick St John Bishopstone Coombe Bissett Nunton Alvediston	Lay Led David Blundell Lay Led Tony Monds Jenny Taylor Roger Leake Catherine Blundell
21 November CHRIST THE KING	8.00am 9.30am 9.30am 11.00am 11.00am 11.00am	Holy Communion (BCP) Parish Communion (CW) Parish Communion (CW) Morning Prayer (BCP) Parish Communion (CW) Parish Communion (CW)	Bowerchalke Bishopstone Odstock Ebbesbourne Wake Homington Berwick St John	Catherine Blundell Jenny Taylor Roger Leake Biddy Trahair Jenny Taylor Catherine Blundell
28 November 1st Sunday of Advent	9.00am 9.30am 9.30am 11.00am 11.00am 11.00am 11.00am 6.00pm	Holy Communion (BCP) Family Communion (CW) Parish Communion (CW) Family Service Morning Prayer (BCP) Parish Communion (CW) Holy Communion (BCP) Evening Prayer (BCP)	Berwick St John Broad Chalke Charlton All Saints Nunton Homington Bishopstone Alvediston Bowerchalke	Kate Rosslyn Smith Catherine Blundell Ann Philp Roger Leake David Blundell Jenny Taylor Catherine Blundell Lay Led
5 December 2nd Sunday of Advent	9.30am 9.30am 11.00am 11.00am 11.00am 11.00am	Parish Communion (CW) Parish Communion (CW) Family Communion (CW) Family Communion (CW) Morning Service (CW) Morning Prayer (BCP)	Broad Chalke Britford Ebbesbourne Wake Coombe Bissett Odstock Berwick St John	Roger Leake Jenny Taylor Roger Leake Jenny Taylor Adrian Taylor Lay Led

Ministry Team:

Team Rector - The Revd Catherine Blundell: 01722 780134
Team Vicar - The Revd Canon Jenny Taylor: 01722 503081, Curate - The Revd Roger Leake: 07947149456
Licensed Lay Minister - Mr David Blundell: 01722 780134
Team Administrator - Mrs Emily Broomhead: 07890 262376
URC Ministers - The Revds Ana & Tod Gobledale 01722 330980, The Revd Jackie Lowe: 01722 780008

Assisting Ministers:

The Revd Canon Anthony Hawley: 01794 390607, The Revd Canon Tony Monds: 01722 420942
The Revd Canon Ann Philp: 01722 555178, The Revd Kate Rosslyn Smith: 01722 780011

Lay Worship Leaders:

Yvonne & Kevin Follett: 01747 828785, Caroline Lamb: 01722 780789, Sally Leaver: 01722 780447,
Naomi Martin: 07713031774, Don Morgan: 01722 718557, Adrian Taylor: 01722 325862, Gill Riley: 01722 780538, Janet Roe: 01725 519242,
Biddy Trahair: 01722 780666, Rhoderick Voremberg: 07785 304142, James Wardroper: 01722 718152

If there are any problems with the delivery of STaB please contact Sue Porter on porter1totalserve@gmail.com or 01722 780459.