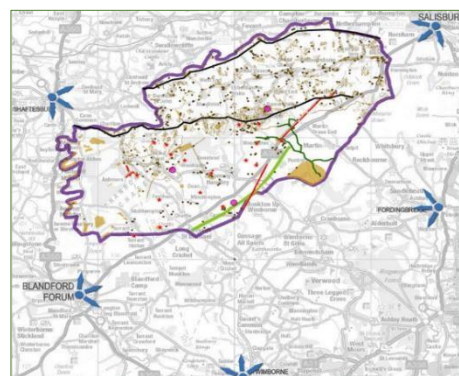


The vision for a 2.7M Landscape Partnership Scheme over 5 years

“A Cranborne Chase and Chalke Valley which is a healthier and better functioning landscape for people and wildlife, nationally recognised for its beauty, its extraordinary historic links to the past, a place where everyone can make a true connection with their environment, a living landscape where opportunities exist for present and future generations to appreciate and enjoy nature and heritage”.

To do this we aspire to:

- Orchestrate practical work to conserve, enhance & restore key features of natural and cultural heritage
- Work in partnership to promote and aid sustainable management of the landscape
- Provide opportunities for individuals and communities to care for, and make decisions about local heritage
- Foster a pride in the unique and rich heritage of this landscape – amongst the local population, businesses and gateway communities
- Promote opportunities for people to develop knowledge and skills to increase sustainability of the landscape and provide a legacy for the future



Nurturing Nature (Biodiversity programme – engaging communities, volunteer training, work & landowner grants)



375ha of habitat improved or better managed as a result of practical volunteer work, grants & biological surveying (mainly Chalk Grassland). 110 people trained in species identification or practical conservation skills. 5000 people engaged. 3400 volunteer recording or practical conservation days (including youth champions). A legacy of 50 regular volunteer recorders inspired, trained and continuing to operate in the area. 30% of people in communities can name key species or habitats associated with this special landscape around them or on the doorstep.

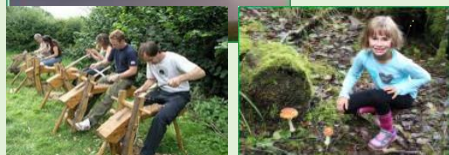
Crystal Clear Ebbles (Protection, restoration, and improvement of this important chalk river)

22km of Ebbles in better quality, 15km of banks better managed, 12 species aided, 60 projects tackle run-off and alien species as a result of action by landowners, communities, volunteers and grants. 900 volunteer days, a booklet on good bank management, 92 people learning new practical survey and conservation skills. An animated film will be made by young people in the valley to celebrate how special the river is, what is being done to improve and care for it. A legacy of better land management throughout the valley and 4 volunteer river wardens.



Wonderful Woodlands (Bringing woodlands back to life, skills, education & jobs)

At least 115ha of the woodland will be created, brought back into management or improved for biodiversity and landscape value. 20 key heritage features or key woodland species safeguarded for the future. 90 people trained in key woodland skills & crafts (including 40 young people). Resource pack, training, site advice and grants to landowners. 230 volunteer days and 4 new woodcraft businesses, individuals or communities managing local woodlands. 70 young people who have little contact with the landscape on their doorstep will be helped to grow their confidence through our ‘Woodland Wild things’ programme.



Greater Grazing (Martin Down)

Transforming grazing on the 3rd largest unbroken chalk grassland in the UK. 380 hectares of chalk grassland improved or safeguarded. At least 15 key species benefiting. 10 ancient monuments cleared and protected. 1250 people attending events, 240 volunteer days conservation work.



Starry, Starry Nights (Dark Skies training & events)

Baseline monitoring of dark skies to aid Dark Sky Reserve Status, a recruitment and training programme resulting in at least 12 new Dark Sky champions monitoring and working to influence lighting in their communities and 4 new Dark Sky event leaders to run starry night sessions and walks. More than 200 young people receiving workshops and 150 people attending events. A pop-up planetarium, plus training and resources for local tourism businesses to promote the quality of our dark skies in the area.



Champions for the past (Huge archaeological engagement & action programme)

Communities of Shaftesbury, Salisbury, Blandford, Wimborne and Fordingbridge engaged with 'History Hunters' roadshow to inspire interest in the historic landscape on their doorstep. More than 4000 children (5-11) will receive outreach dig box, artefact, stories & skills sessions from museum volunteers and actors playing local archaeologists. 'Horrible histories style' roadshows will take place in each town to inspire interest and sign up as volunteers for the programme.



200 new volunteers trained in a whole range of archaeological skills/activities. Big Dig and open events for more than 5800 people. LiDAR air survey of the area and on-line mapping provided for communities and volunteers to investigate. 200 new sites ground-truthed, recorded and many targeted for conservation and grant work to safeguard for future generations. At least 30 sites in better condition by the end of the project. 5 trench investigations and 5 research projects. New volunteer groups formed and group leaders/champions developed, 2 heritage traineeships per annum across our museum cluster, plus outcomes such as - Ph.D. projects, new interpretation & online resources



Heritage Schools Cluster

Teacher network trained by Historic England in ways to incorporate heritage more broadly into the curriculum, online tools, and research skills. As a result of the project 24 local schools will have increased use of heritage in the curriculum, they will be 20 school initiated local heritage projects, 4800 children benefiting, resources for other schools in the area providing ideas and guidance for making more of the history on their doorstep. The network will test landscape partnership products like interpretation for suitability. A film may be made to capture the journey during the project of schools connecting with their local heritage.

Bringing the landscape to life (Interpretation & Discovery Programme)



12 places will benefit from cutting-edge technology to bring the lumps, bumps, and stories of the landscape to life, allow people to time travel to see sites in the past and bring historical characters to life as virtual guides. 6 more traditional interpretation points will be provided at key locations.



Interpretation is intended to transform how local people, communities, and visitors understand or value this extraordinarily rich landscape. The imprint of man and stories of this landscape are truly inspirational, but unknown to most. Man settled, farmed and undertook ceremonies here before and on a bigger scale than at Stonehenge! Treasure discovery trail app. across 30 sites for families.

Ancient Ways & footsteps on the Chalk (Access programme)

35km of Rights of Way improved, modest parking in a handful of locations, 75km of routes cleared and maintained by volunteers. 15 newly promoted walks and rides. 735 volunteer days involved in route development or practical work. 210 youth volunteer days. 7 new walking champions/walk leaders. 280 people signed up to 'Active Outdoors' site, a new online resource to help individuals suffering from rural isolation find others who may be prepared to share the countryside with them.

Communities caring for Heritage (Community grants)

7 communities to plan their own projects to research, care for or celebrate heritage that is important to them.

Community Arts-based Projects:-

- **Words in the Landscape:** 150 pieces of poetry created/composed, writing competition & Festival of words. We'll be encouraging prose and poetry amongst schoolchildren as part of community creative workshops and a professional poet will produce 5 new works to celebrate the distinctive qualities of the area.
- **Voices in the Landscape:** La Folia delivering 21 workshops, developing new songs of the Chase and delivering performances and online songbook/performance video
- **Walking Festival and Celebration in Silk Flags:** 70 promoted walks over the 5 years. 32 walk leaders found and trained. Community involvement in the creation of silk flags depicting the special qualities of the area used at promotional events and workshops. The ambition is for a walking festival to grow in size each year, alongside an increasing number of silk flags accompanying walkers each time.
- **Characters of the Chase - Community Theatre:** Community actors will appear during the walking festival to join the participants, connecting them to a range of inspiring characters and stories connected to the Cranborne Chase and Chalke Valley area. There will be a large Community play planned and delivered to celebrate the characters of the Chase, filmed to share with a wider audience. Workshops involving communities and delivered at end of scheme celebrations.
- **Artist residencies:** 135 new pieces of art inspired by the landscape as new artists are mentored by professionals through 9 workshops. These will be exhibited online and at the scheme celebration event.
- **Memories captured (Oral history project):** Traditional land management skills and craftsmanship, such as coppicing, making hurdles and water meadow management were being lost with the older generation. This project will capture 40 people's oral stories and involve 15 people being trained in undertaking recorded interviews.



Roman Rally & Living History Events

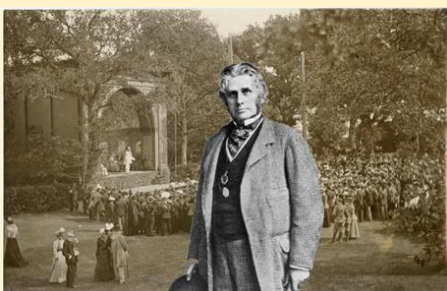
To heighten interest in the scheme, and the number of heritage features still obvious in today's landscape, a march of a Roman unit of 30+ soldiers will take place along the Ackling Dyke south of Broad Chalke. Those recreating the Roman unit will be joined by school junior Roman units following behind (with workshops in schools prior to the event). This project is intended to capture media attention and coverage with additional 'Living History' activities on



Romans and their links to the area visited by thousands at the Chalke Valley History Festival and Ancient Technology Centre over two successive weekends. The units march along Ackling Dyke, return over Pentbury Knoll and the living history activities at both events will be filmed and shared as an interpretative resource into the future.

Dorset Cursus Ceremony

The Dorset Cursus is the largest Neolithic site in the UK. It was a ceremonial causeway kept free of vegetation 10km long and over 80metres wide. We are planning to recreate the route with markers across the landscape and through a large scale event to recreate a winter solstice Neolithic/Bronze Age ceremony for many hundreds of people to watch, with a henge choir and landscape scale fire installation. More than 50 volunteers will help and they'll be museum tours, talks and Neolithic art workshops based at the Cursus in the run-up to the event.



Scheme Celebration

In September during Yr 4, the whole scheme will be celebrated as a festival day with performances, talks, displays, exhibitions, awards for volunteers under a themed recreation of the Edwardian education events held at Larmer Tree by Pitt-Rivers. It is hoped that thousands will attend to celebrate the successes of the scheme and as a spectacle in its own right. Presenters and guides on the day will all be dressed in period costume.